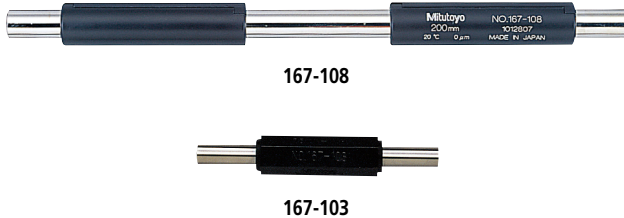


千分尺

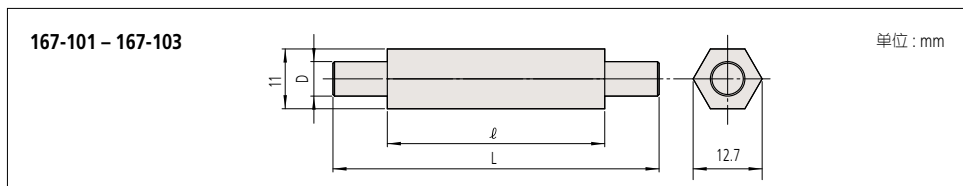
品牌信赖的证明，三丰测量工具的起点

千分尺量杆 167 系列 MB

- 用于外径千分尺测量后或开始前准确调零。

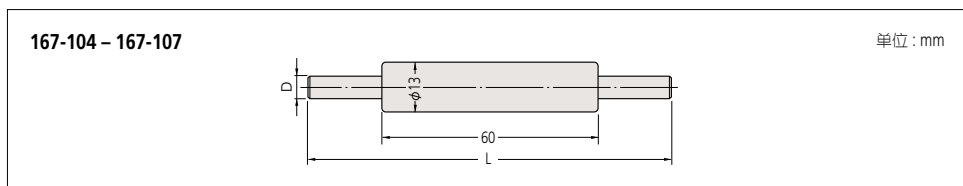


规格和尺寸



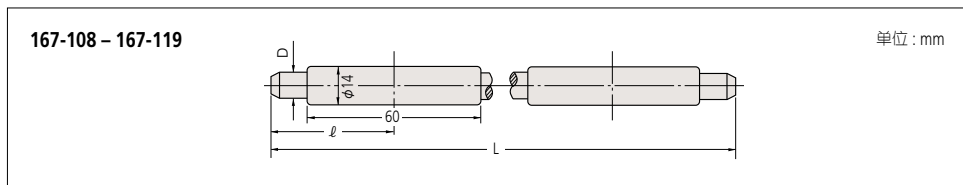
公制型

货号	长度(L)	公差值	l	直径(D)
167-101	25mm	±1.5μm	18	6.35mm
167-102	50mm	±2.0μm	40	6.35mm
167-103	75mm	±2.5μm	40	6.35mm



公制型

货号	长度(L)	公差值	直径(D)
167-104	100mm	±3μm	7.9mm
167-105	125mm	±3.5μm	7.9mm
167-106	150mm	±4μm	7.9mm
167-107	175mm	±4.5μm	7.9mm

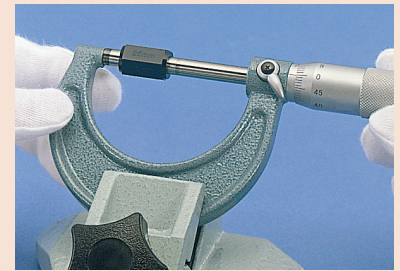


公制型

货号	长度(L)	公差值	l	直径(D)
167-108	200mm	±5.0μm	47	9.4mm
167-109	225mm	±5.5μm	47	9.4mm
167-110	250mm	±6.0μm	52	9.4mm
167-111	275mm	±6.5μm	57	9.4mm
167-112	300mm	±7μm	64	9.4mm
167-113	325mm	±7.5μm	69	9.4mm
167-114	350mm	±8μm	74	9.4mm
167-115	375mm	±8.5μm	80	9.4mm
167-116	400mm	±9μm	85	9.4mm
167-117	425mm	±9.5μm	90	9.4mm
167-118	450mm	±10μm	95	9.4mm
167-119	475mm	±10.5μm	101	9.4mm

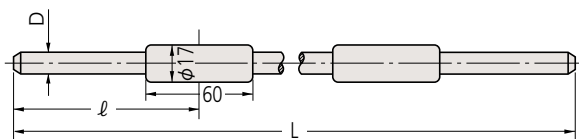
规格

平面度: 0.3μm
平行度: 2μm



167-120 - 167-404

单位: mm



公制型

货号	长度 (L)	公差值	l	直径 (D)
167-120	500mm	±11μm	106	11.9mm
167-121	525mm	±11.5μm	112	11.9mm
167-122	550mm	±12.0μm	117	11.9mm
167-123	575mm	±12.5μm	122	11.9mm
167-124	600mm	±13μm	128	11.9mm
167-125	625mm	±13.5μm	133	11.9mm
167-126	650mm	±14μm	138	11.9mm
167-127	675mm	±14.5μm	142	11.9mm
167-128	700mm	±15μm	147	11.9mm
167-129	725mm	±15.5μm	153	11.9mm
167-130	750mm	±16μm	158	11.9mm
167-131	775mm	±16.5μm	164	11.9mm
167-132	800mm	±17μm	170	11.9mm
167-133	825mm	±17.5μm	175	11.9mm
167-134	850mm	±18μm	180	11.9mm
167-135	875mm	±18.5μm	185	11.9mm
167-136	900mm	±19μm	191	11.9mm
167-137	925mm	±19.5μm	196	11.9mm
167-138	950mm	±20μm	201	11.9mm
167-139	975mm	±20.5μm	207	11.9mm
167-140	1000mm	±21μm	211	11.9mm
167-365	1025mm	±21.5μm	217	11.9mm
167-366	1050mm	±22μm	222	11.9mm
167-367	1075mm	±22.5μm	227	11.9mm
167-368	1100mm	±23μm	232	11.9mm
167-369	1125mm	±23.5μm	238	11.9mm
167-370	1150mm	±24μm	243	11.9mm
167-371	1175mm	±24.5μm	248	11.9mm
167-372	1200mm	±25μm	254	11.9mm
167-373	1225mm	±25.5μm	259	11.9mm
167-374	1250mm	±26μm	264	11.9mm
167-375	1275mm	±26.5μm	269	11.9mm
167-376	1300mm	±27μm	275	11.9mm
167-377	1325mm	±27.5μm	280	11.9mm
167-378	1350mm	±28μm	285	11.9mm
167-379	1375mm	±28.5μm	291	11.9mm
167-380	1400mm	±29μm	296	11.9mm
167-381	1425mm	±29.5μm	301	11.9mm
167-382	1450mm	±30μm	306	11.9mm
167-383	1475mm	±30.5μm	312	11.9mm
167-384	1500mm	±31μm	317	11.9mm
167-385	1525mm	±31.5μm	322	11.9mm
167-386	1550mm	±32μm	328	11.9mm
167-387	1575mm	±32.5μm	333	11.9mm
167-388	1600mm	±33μm	338	11.9mm
167-389	1625mm	±33.5μm	343	11.9mm
167-390	1650mm	±34μm	349	11.9mm
167-391	1675mm	±34.5μm	354	11.9mm
167-392	1700mm	±35μm	359	11.9mm
167-393	1725mm	±35.5μm	364	11.9mm
167-394	1750mm	±36μm	370	11.9mm
167-395	1775mm	±36.5μm	375	11.9mm
167-396	1800mm	±37μm	380	11.9mm
167-397	1825mm	±37.5μm	386	11.9mm
167-398	1850mm	±38μm	391	11.9mm
167-399	1875mm	±38.5μm	396	11.9mm
167-400	1900mm	±39μm	401	11.9mm
167-401	1925mm	±39.5μm	407	11.9mm
167-402	1950mm	±40μm	412	11.9mm
167-403	1975mm	±40.5μm	417	11.9mm
167-404	2000mm	±41μm	423	11.9mm